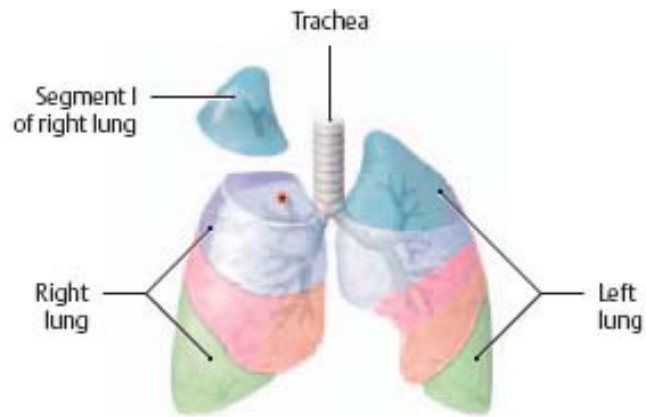


La chirurgie des poumons

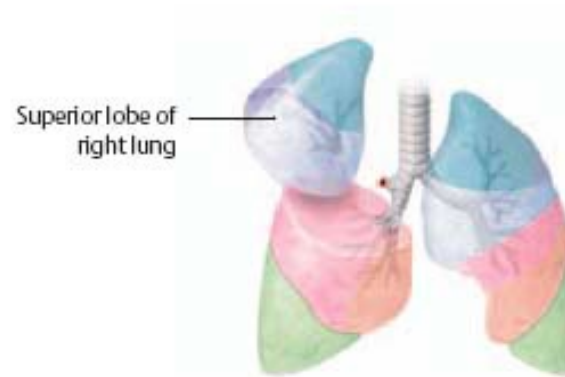
Segmentectomie



A Segmentectomy (wedge resection): Removal of one or more segments.

ablation du segment apical
(segment I) droit

Lobectomie



B Lobectomy: Removal of lobe.

ablation du lobe
supérieur droit

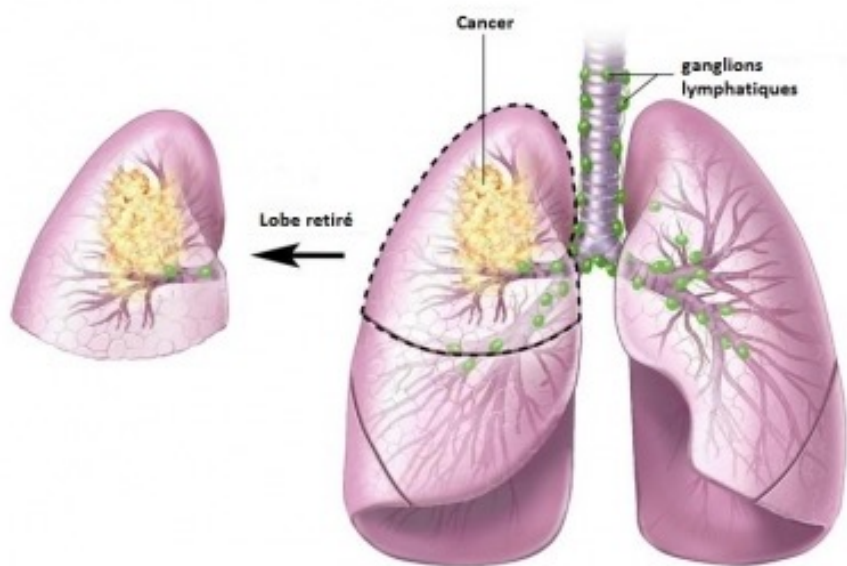
Pneumectomie



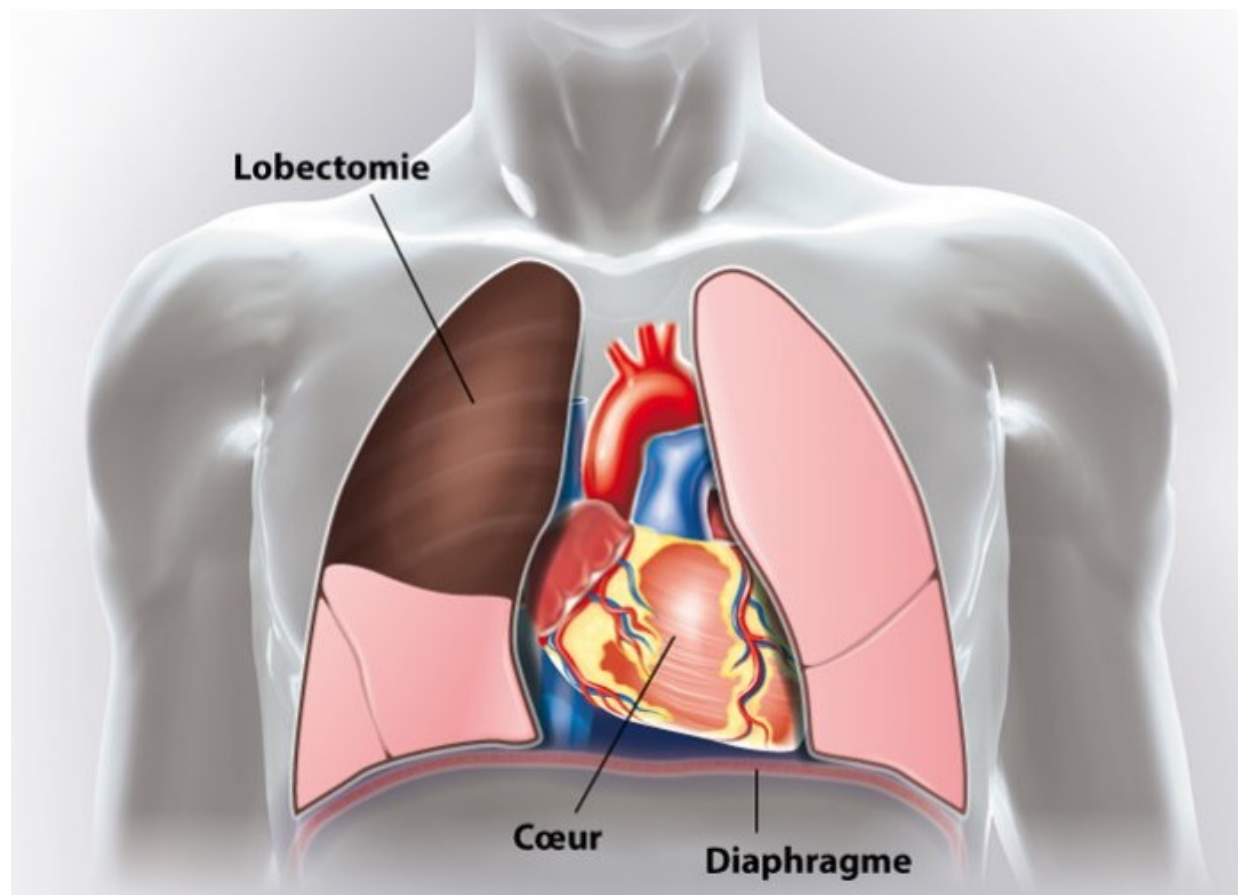
C Pneumectomy: Removal of entire lung.

ablation du poumon droit

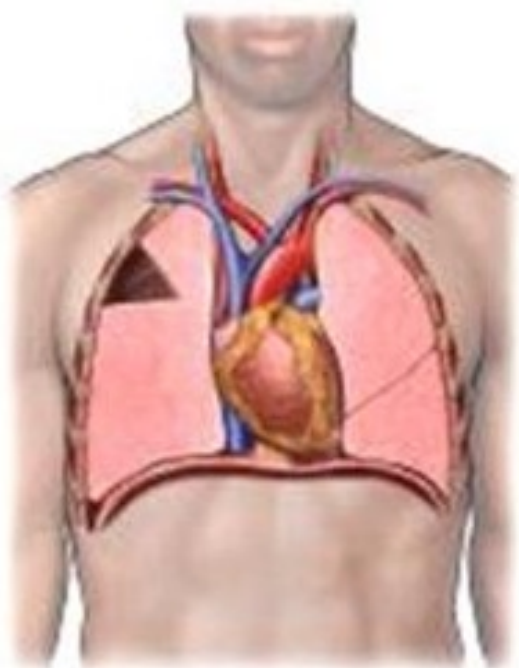
Importance pratique des segments broncho-pulmonaires :



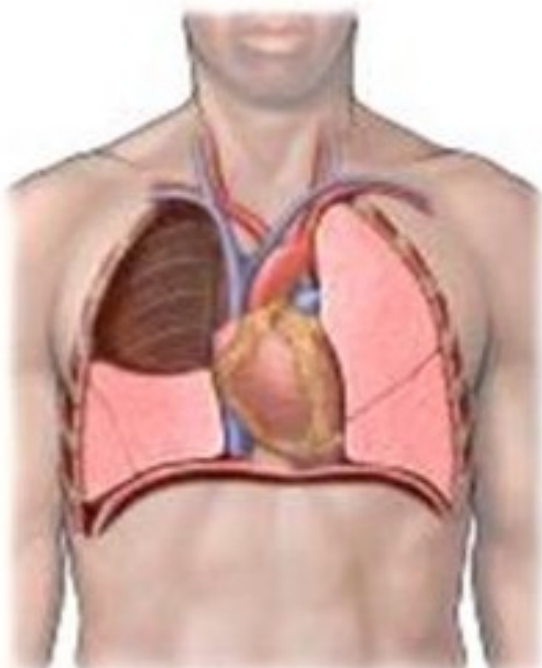
9/10 opérations pour cancer



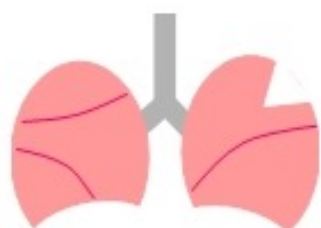
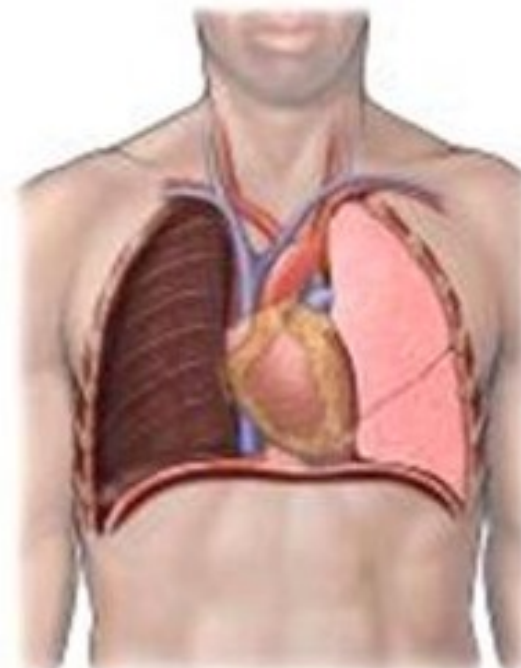
Résection cunéiforme



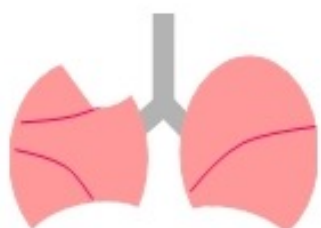
Lobectomie



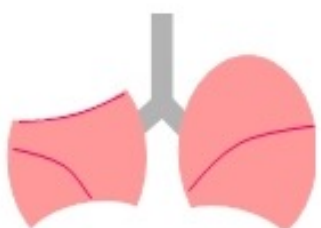
Pneumonectomie



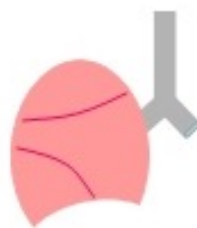
Résection en coin
(wedge)



Segmentectomie



Lobectomie

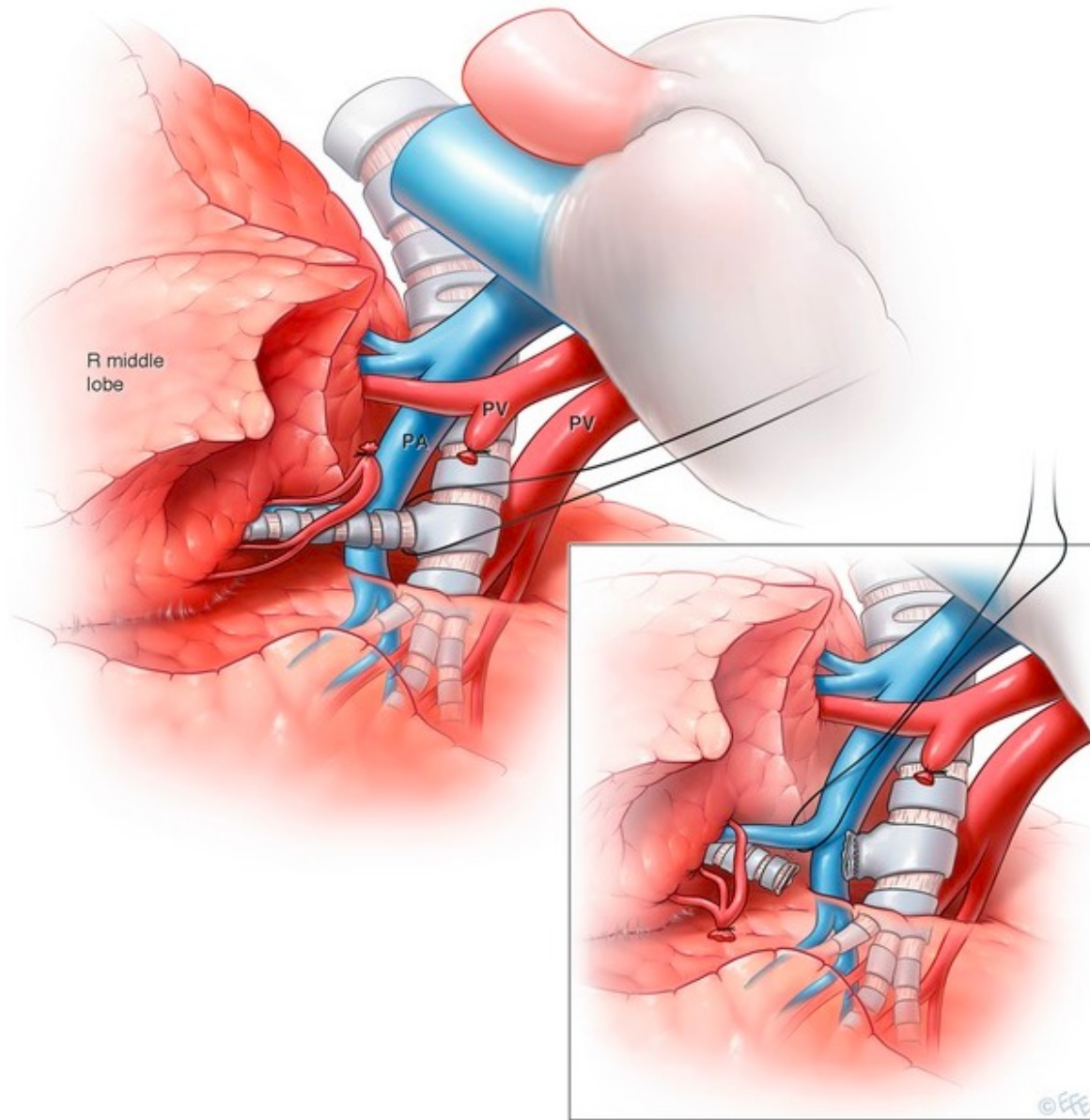


Pneumonectomie

Lobectomie

Ablation du
lobe moyen
droit

Interruption
1 de la veine
2 de la bronche lobaire
3 de l'artère



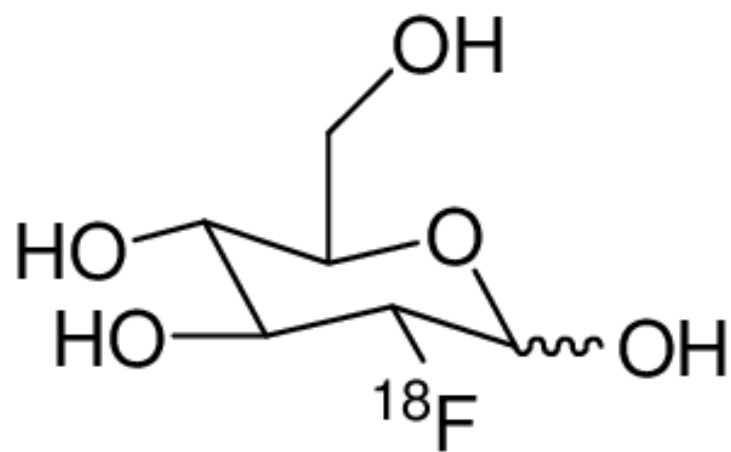




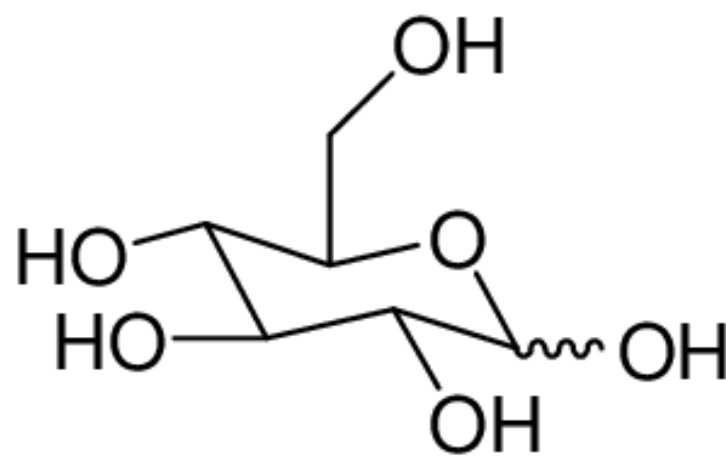


18FDG-PET-CT



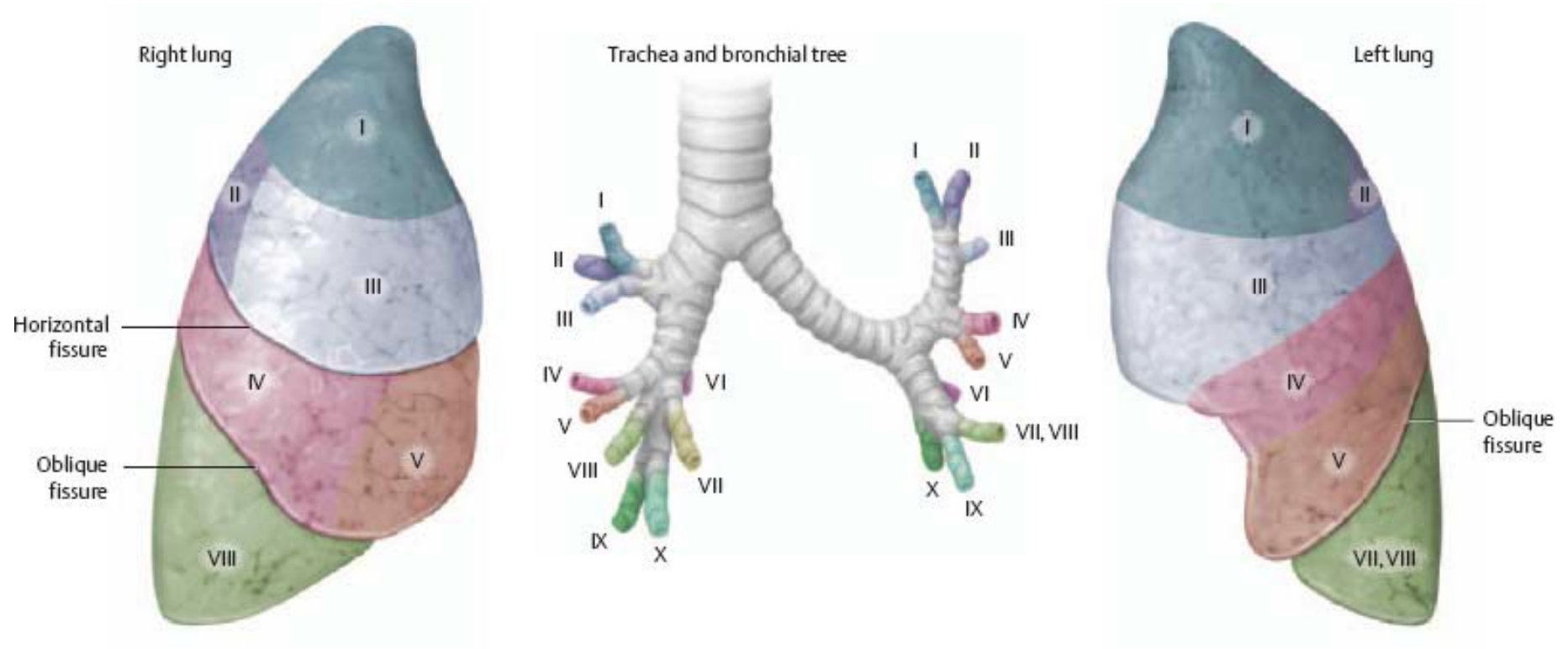


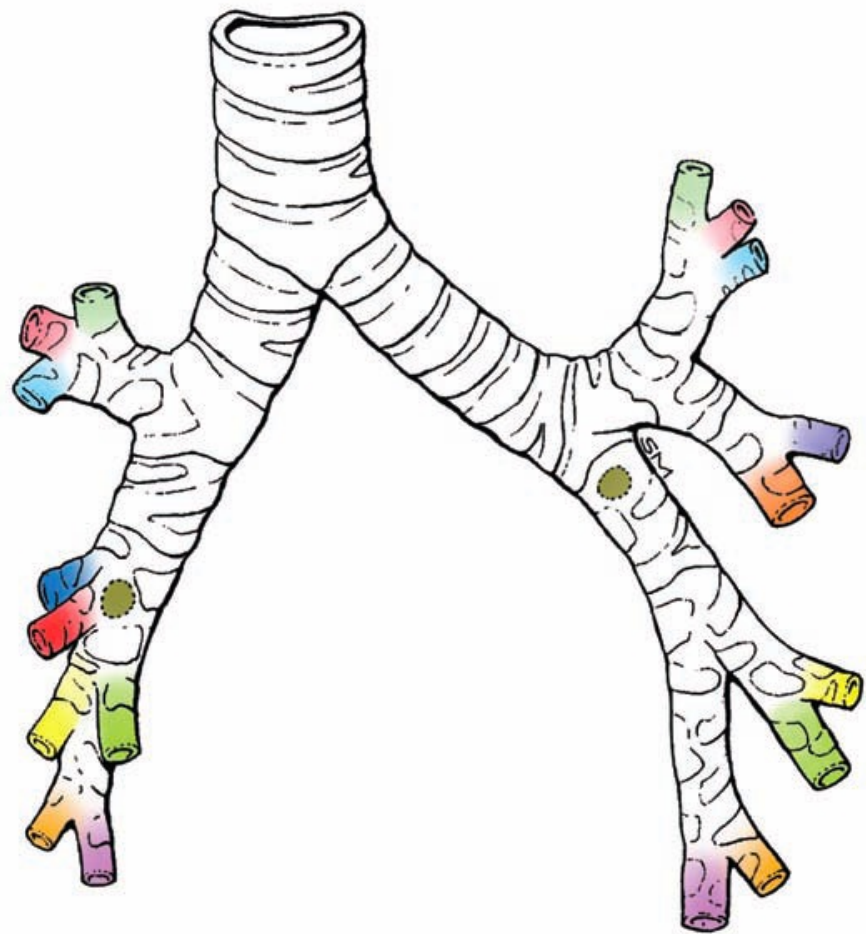
^{18}F FDG



Glucose

Les bronches segmentaires



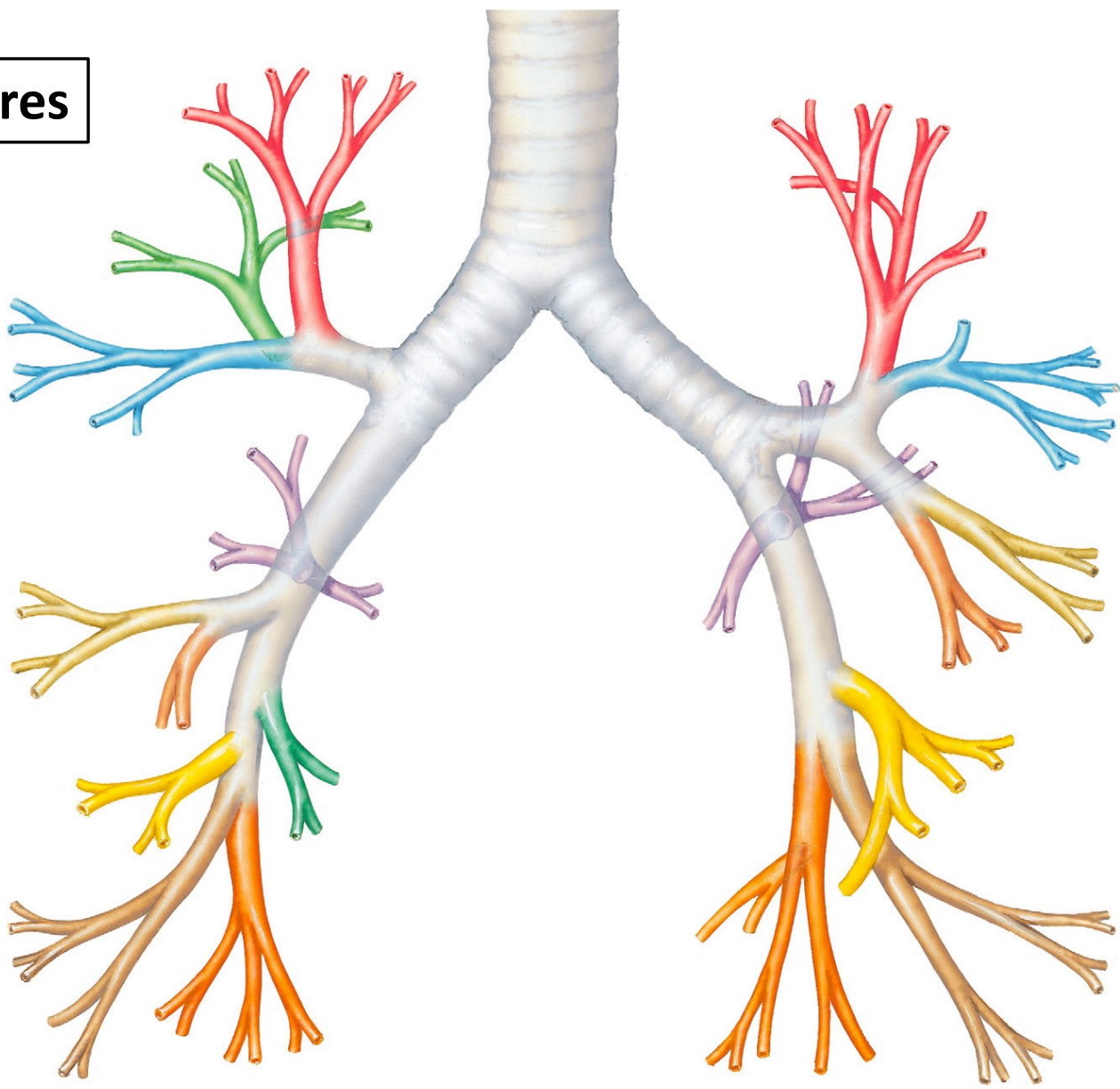


Voies respiratoires

Lobe supérieur
3 segments

Lobe moyen
2 segments

Lobe inférieur
5 segments



Poumon gauche :

8 segments

Lobe supérieur
4 segments

Lobe inférieur
4 segments